

APPENDIX C



Tony Keaveney
Assistant Director
Housing Services

Afzal Ahmed
Team Manager – 13+ Transition & Leaving
Care



Suitable Accommodation for Looked After Children and Care Leavers

Publications



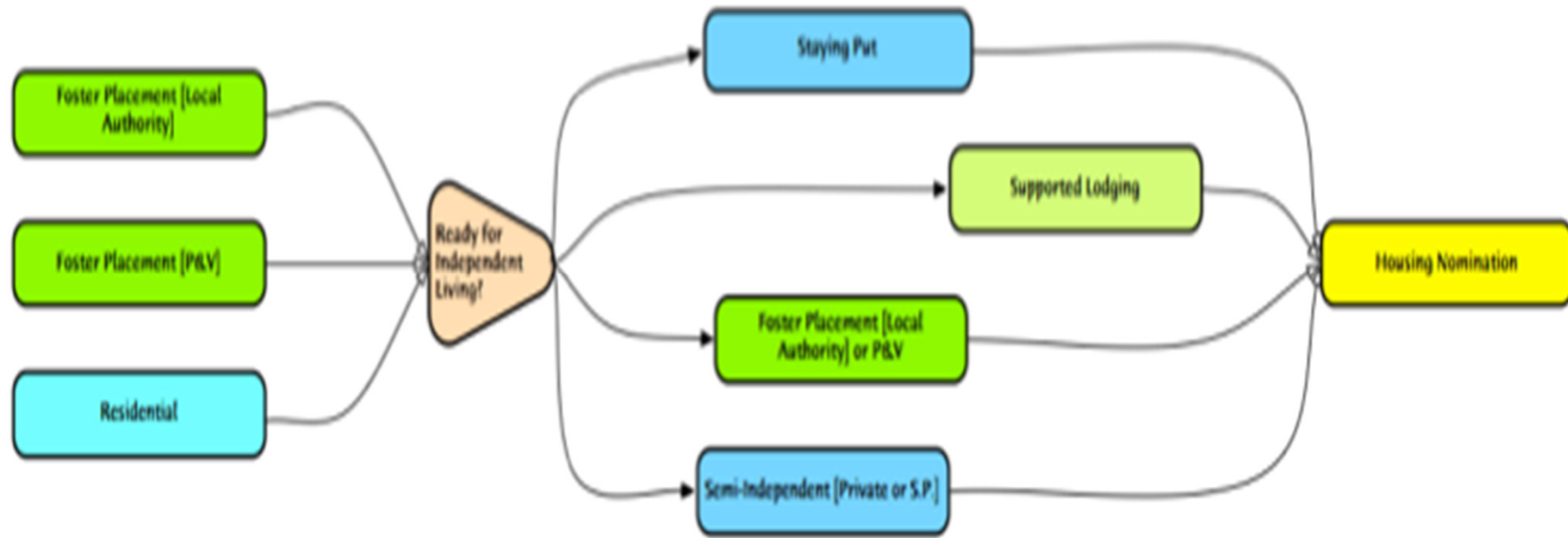
This statutory guidance provides clarification on the ‘sufficiency duty’ to secure sufficient accommodation to meet the needs of our looked after children. It is designed to guide us to:

- modify our commissioning practices to ensure we have sufficient local provision to meet the needs of our looked after children*
- ensure we have a strategic plan around commissioning placements for our looked-after children population.*

Analysing Needs & Gaps



Placement Pathways





Facts & Figures

- ⦿ *85* looked after children [12-17]*
- ⦿ *40* young people aged 16-17*
- ⦿ *89 care leavers*

Placement Destination for LAC 15-17 yr. olds*



Placement Type	15	16	17	Total
In-House FC	7	4	2	13
IFA	2	2	8	12
Children' s Residential Home	3	4	3	10
Semi-Independent	0	2	8	10
Living with family	0	2	4	6
Missing	0	1	1	2
Total	12	15	26	53

* January 2014 [Does not include CWD - follow a different pathways]



What is suitable accommodation?

Care leavers were asked in a recent survey 'what do you think is suitable accommodation' ?*

- ***Safe [34%]***
- ***Location/Area [12%]***
- ***Support [12%]***
- ***Good State of Repair [9%]***
- ***Affordable/Cost [5%]***



Current Supported Housing Provision for Young People

Signposts , Based in Dunstable – 36 units (of which approx 18 for YP). Only available to YP in the “south”

MayDay Trust , Based in Leighton Buzzard – 40 units

Beds Housing Link – 18 units – mixed sex and age up to 65

Floating support services – Tenant Liaison Service and Bromford Support – 300 units but only a handful used by YP

Needs estimates – how many units of support needed at any one time?



Care Leavers – 21 units of Accommodation Based Support, and 36 units of floating support

Homeless 16 and 17 year olds – 22 units of Accommodation Based Support and 23 units of floating support

Gap for young people – 29 units Accommodation Based, and 61 units floating

Core Socially Excluded gap – 78 units of Accommodation Based and 211 units floating

Access to social housing tenancies-:



Around 1000 lets per annum, and anyone can joint the register at 16.

New allocation policy will introduce quotas for vulnerable groups – ring-fenced access to allocations.

Challenge will be provision of support to prevent tenancy failure and establish independent homes that feel safe and secure.

Market Position Statement



This will articulate the requirement for Young People, based on the needs estimates, and seek progress towards that provision being available.

Revenue funding for support will be sticking point – may require disinvestment in existing services.

We can ring-fence access to existing floating services and put support in place up-front.

New possibilities –

Supported house shares – best use of stock

Key-ring schemes for people needing lower-level

support.

What have we done?



- ⦿ *Support for Success Panel.*
- ⦿ *Increase setting up home allowance to £2,000.*
- ⦿ *Development of Accredited Independent Life Skills Programme in Partnership with Youth Support Service.*
- ⦿ *Develop further joint work with housing colleagues and independent providers*
- ⦿ *Continue consultations with young people*

Support for Success Panel



- ⦿ *Care Leavers & Looked After Children fulfill their potential into adulthood*
- ⦿ *Meets Monthly*
- ⦿ *Multi Agency – Key Partners*
- ⦿ *Reduce the number of young people not in education, employment or training.*

Next Phase 6 Months

- ⦿ *Framework for Private Providers by 1/4/14*
- ⦿ *Joint Housing Nomination Protocol by 1/4/14*
- ⦿ *Develop CBC Housing Pathways for Care Leavers that meet their needs by 30/6/14*
- ⦿ *Multi-agency & multi-disciplinary group to coordinate work by 1/5/14*